



安徽新诺精工股份有限公司
SINO MACHINERY CO., LTD.

51# WEST RING ROAD, HUIZHOU DISTRICT, HUANGSHAN CITY, ANHUI, CHINA
TEL: +86-559-3584618 FAX: +86-559-3583905



QUOTATION SCHEME OF
VMC1060B
VERTICAL MACHINING CENTER

2. TECHNICAL INFORMATION

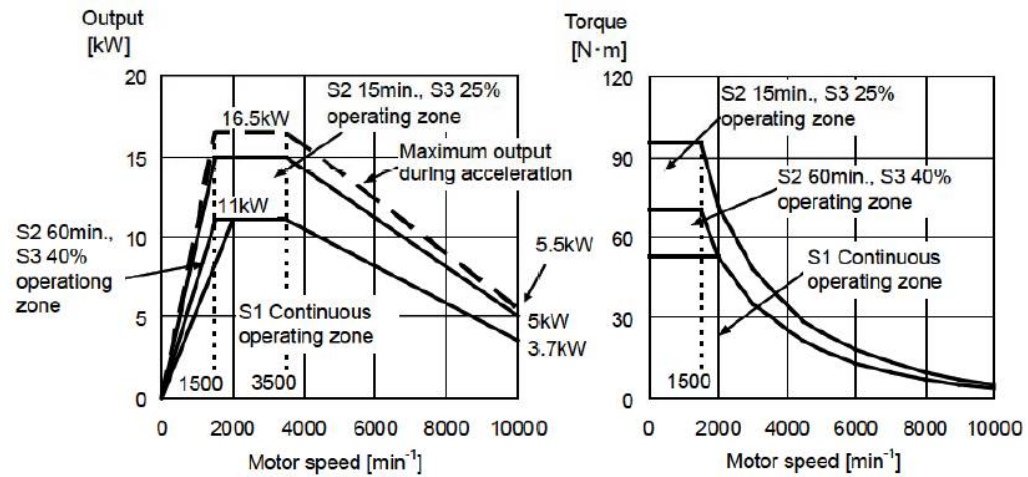
2.1 MACHINE PARAMETERS

CODE	ITEM		DETAILS
1	WORKTABLE (WIDTH×LENGTH)	mm	600*1200
2	T SLOTS	mm	5-18
3	DISTANCE BETWEEN T SLOTS	mm	100
4	MAX.LOAD BEARING OF WORKTABLE	kg	800
TRAVEL			
5	X AXIS	mm	1000
6	Y AXIS	mm	620
7	Z AXIS	mm	630
8	DISTANCE FROM COLUM TO SPINDLE CENTER	mm	667
9	DISTANCE FROM TABLE TOP SURFACE TO SPINDLE NOSE	mm	110~740
SPINDLE			
10	SPINDLE HOLE TAPER	BT40 7:24	
11	SPINDLE SPEED RANGE	r/min	20-8000
12	THE TRANSMISSIONOF SPINDLE BOX	BELT DRIVE	
13	MAIN MOTOR MODEL	βiIP 22/ 8000-B	
14	SERVO MAIN MOTOR RATED POWER	kw	11
15	SERVO MAIN MOTOR 30MINS POWER	kw	15
16	SERVO MAIN MOTOR RATED OUTPUT TORQUE	Nm	105
17	SPINDLE PART DYNAMIC BALANCE TYPE	G1	
18	SPINDLE ACCURACY	SPINDLE FACE RUNOUT:0.005mm	
		SPINDLE RADIAL RUNOUT :NEAR-END 0.003mm	
TOOLS HOLDER SIZE			
19	TOOLS HOLDER STANDARD	MSA403 BT40	
20	RIVET STANDARD	MSA403 P40T-1	
FEED			
20	X/Y FEED MOTOR MODEL	βiSC 22/3000	
22	X/Y FEED MOTOR MAX.SPEED	r/min	3000
23	X/Y FEED MOTOR RATED POWER	kw	3
24	X/Y FEED MOTOR RATED OUTPUT TORQUE	Nm	20

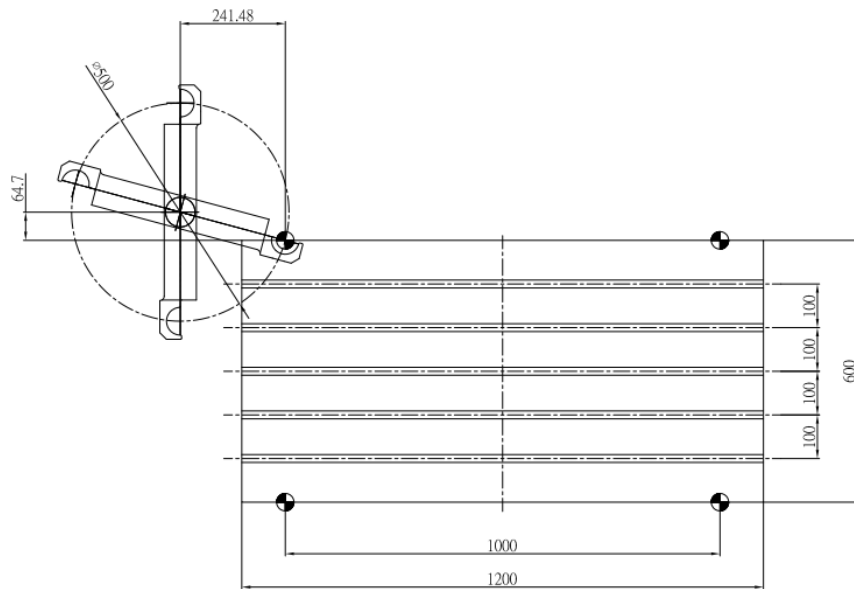
25	Z AXIS FEED MOTOR MODEL	βiS 40B/2000	
26	Z AXIS FEED MOTOR MAX SPEED	r/min	2000
27	Z FEED MOTOR RATED POWER	kw	3
28	Z FEED MOTOR RATED OUTPUT TORQUE	Nm	36
29	X/Y FEED RATE	m/min	36
30	Z FEED RATE	m/min	32
31	CUTTING FEED SPEED	mm/min	8000
TOOL MAGAZINE			
32	TOOLS MAGAZINE MODEL	MANIPULATOR	
33	CAPACITY	pcs	24
34	FULL TOOLS MAX TOOL DIAMETER	mm	Φ78
35	NEIGHBOR EMPTY TOOL DIAMETER	mm	Φ120
36	MAX.TOOLS ALLOWABLE WEIGHT	kg	8
37	MAX.TOOLS ALLOWABLE LENGTH	mm	300
38	TOOL CHANGE TIME	s	2.5
39	TOOL CHANGE WAY	FORWARD/REVERSAL	
POWER SOURCE			
40	MACHINE ELECTRIC CAPACITY	KVA	20
41	COOLING PUMP FLOW RATE	L/min	30
42	MACHINE COMPRESSED AIR	kg	6 ~ 8
43	POWER REQUIREMENT	3-380V±10% 50Hz	
ENVIRONMENTAL REQUIREMENT			
44	ENVIRONMENTAL TEMPERATURE REQUIREMENT	0℃ ~ 40℃	
45	RELATIVE HUMIDITY	20% ~ 80%	
MACHINE SIZE			
46	MACHINE DIMENSION	mm	2856×2820×2820
47	MACHINE WEIGHT	kg	6800
48	MACHINE SHIELD		FULL PROTECT
ACCURACY			
49	X/Y/Z POSITION ACCURACY	mm	±0.01
50	X/Y/Z RE-POSITION ACCURACY	mm	±0.005

2.2 MACHINE DETAILS

Spindle torque curve



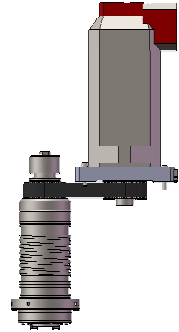
Worktable Processing Area



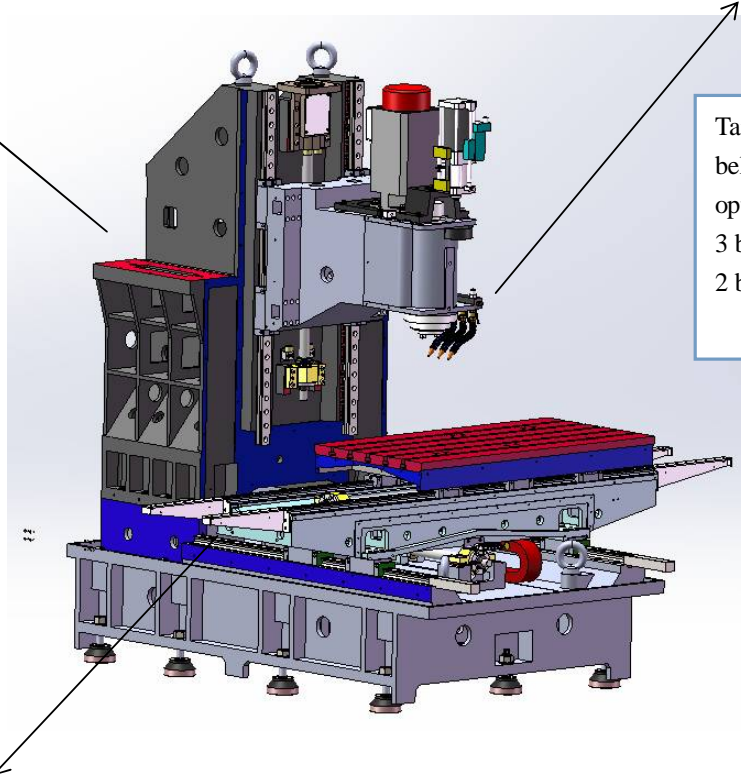
Main parts details



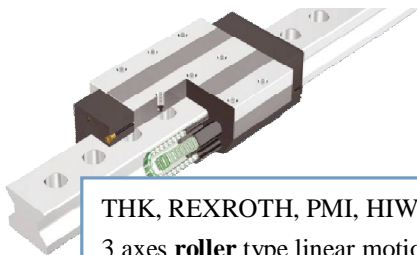
Shoulder carrying Taiwan brand tool magazine with cover to ensure Z axis geometric precision and durability



Taiwan brand BT spindle
belt drive 8000rpm
optional 10000rpm
3 bearings in front end
2 bearings in rear end

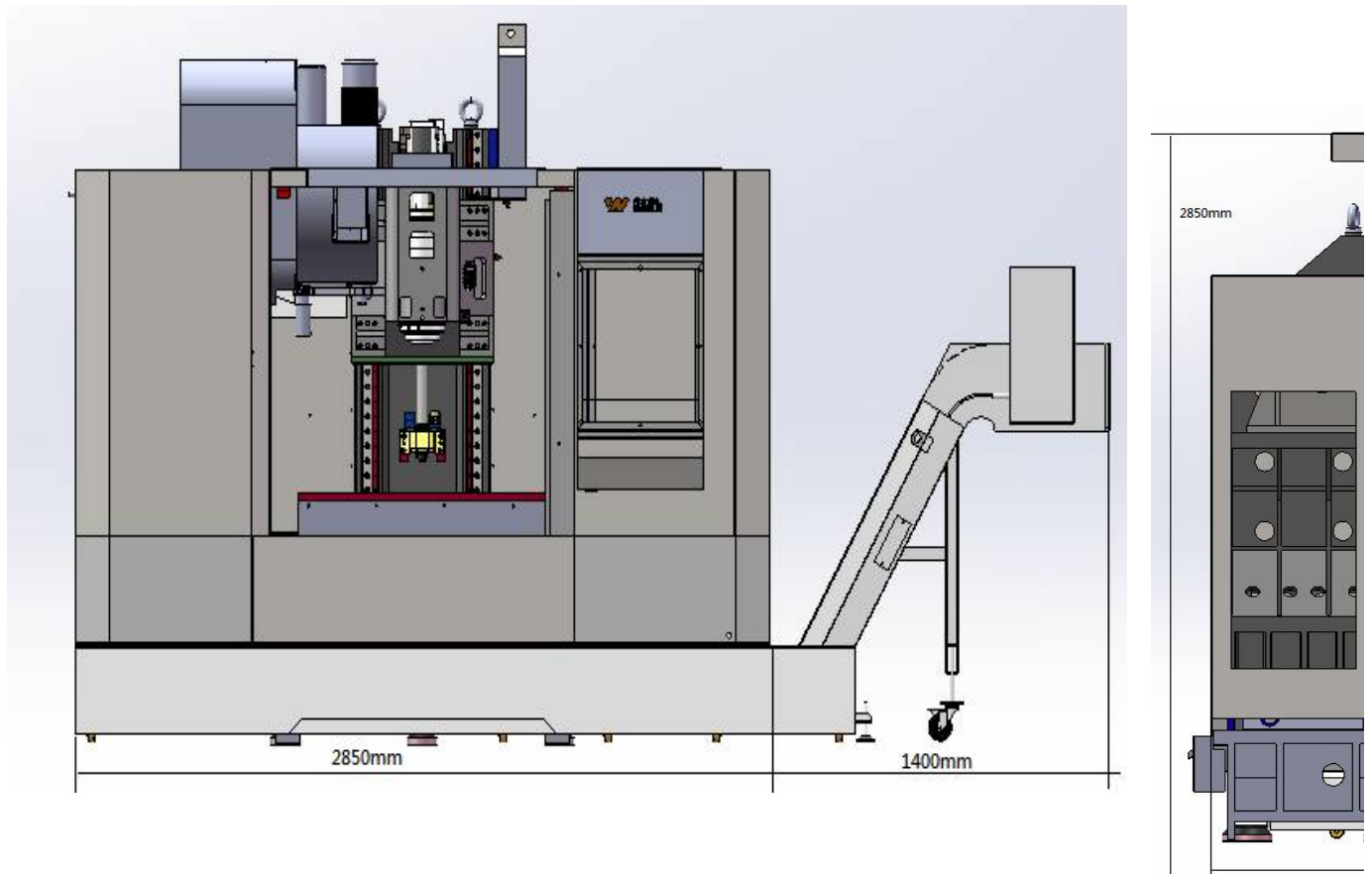


wide column and wide base
Unique casting design to ensure machine rigidity

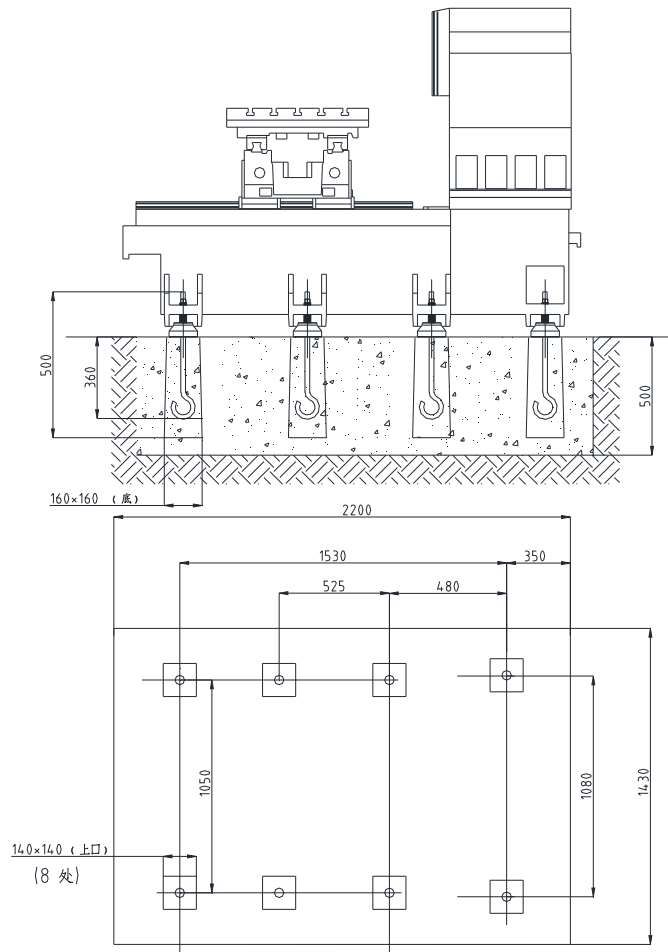


THK, REXROTH, PMI, HIWIN
3 axes **roller** type linear motion guideway
35/45/45(X/Y/Z)

Machine Dimension



Foundation Drawing



2.3 STANDARD ACCESSORIES

CODE	PART NAME	MANUFACTURER	MODEL
1	CONTROL SYSTEM	FANUC	FANUC 0i MF 10/4 inch AICC 1 FUNCTION
2	SERVO FEED MOTOR		
3	SPINDLE SERVO MOTOR		
4	DRIVE		
5	SPINDLE UNIT	KENTURN / ROYAL(TAIWAN)	BT40-φ150
6	BALL SCREW	PMI (TAIWAN)	4016/4016/4016 (C3)
7	LINEAR SLIDE WAY(ROLLER GUIDE)	PMI / REXROTH /HIWIN(TAIWAN)	35/45/45 (P)
8	SPINDLE BEARING	NSK(JAPAN)	7014/7014
9	TOOL CYLINDER	HINAKA	1:11,110cc
10	TOOL MAGAZINE	OKADA(TAIWAN)	24T
11	LOCKNUT	YINSH	YSF M24x1.5P
12	COUPLING	KTR	GS28 98SHA 2.5/25/32
13	HEAT EXCHANGER	TONGFEI	C&H-5AF/220V
14	BALL SCREW BEARING	TPI(TAIWAN)	
15	ELECTRIC PARTS	SCHNEIDER(GERMANY)	
16	PNEUMATIC ELEMENTS	MINDMAN	

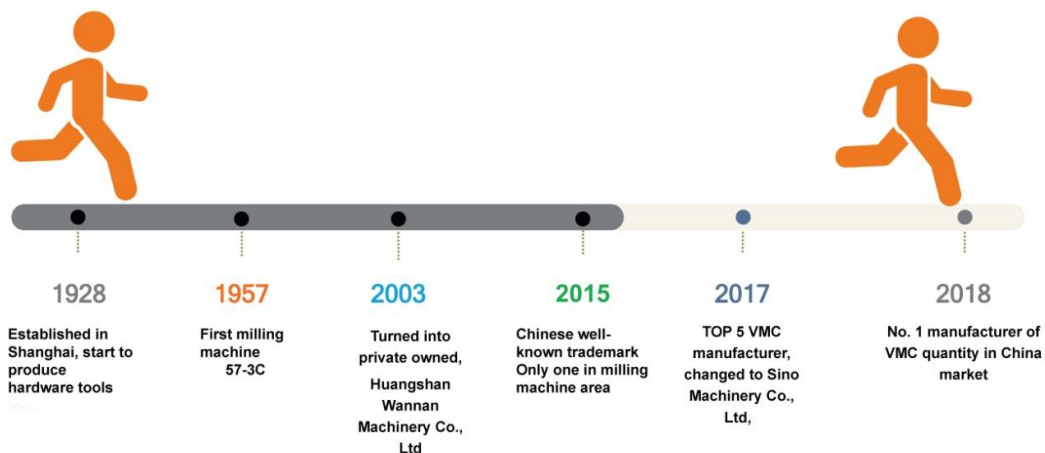
Note: Due to production flexibility, there may be some change on parts brand for above list, but we promise all the brands are all top brand to ensure the same quality.

OTHERS	
X/Y/Z ROLLER LINEAR GUIDE WAY	OIL-WATER SEPARATION
PRE-TENSION FOR BALL SCREW	SPINDLE AIR SEALING
RIGID TAPPING	AUTO LUBRICATION SYSTEM
WORKPIECE COOLING SYSTEM	RS232 INTERFACE
M30 AUTOMATIC POWER-OFF SYSTEM	PORTABLE BLOWING DUST AIR GUN
ELECTRICAL CABINET HEAT EXCHANGER	MANUAL PULSE GENERATOR
ALL OVER PROTECTION SHIELD	ANCHOR BOLTS AND PADS
DOUBLE WORKING LAMP	

3.COMPANY PROFILE



In 1928, Sino Machinery Co., Ltd. established in Shanghai and started with producing hardware tools. Then due to the war, it supplied the military products for the army and developed the first milling machine in 1957. The model is 57-3C which is still sold today. In 2003, we become private-owned and devoted ourselves to the CNC milling machine industry.



With decades of years of development, we now become one of leading manufacturers in China in metal

working industry. With continuous updated models every year, our wide range products can meet different market requirements which include most complete models of conventional milling machine, vertical machining centers, and also horizontal machining center, double column machining centers.



Cooperated with site management consultant agent, we devoted ourselves to create a clean and neat working environment. We firmly believe a good environment can inspire workers to make good machines. Now we have 400 employees. Some of them spent more than 30years here and grow up together with company. Now they are important role in technical research and developing department, inspection department and assembly line due to their professional experience.

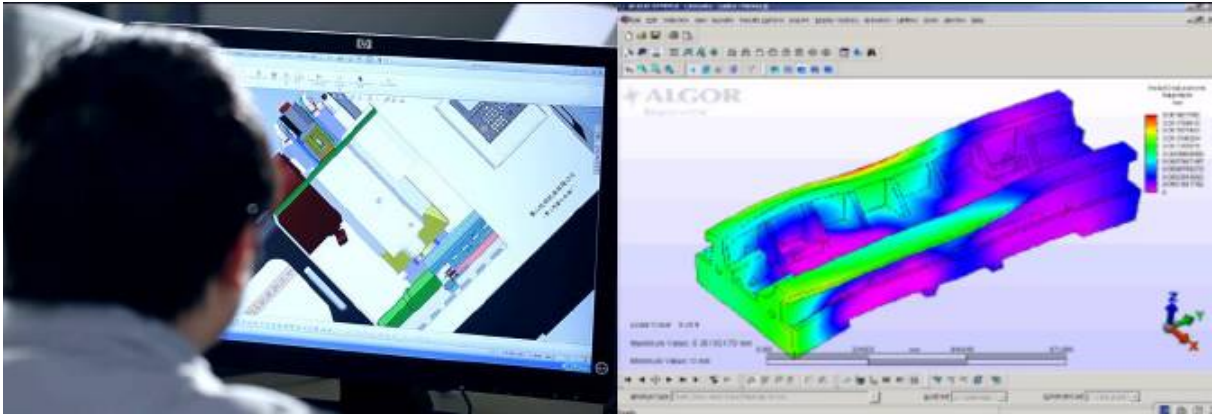
Our boss values a lot on young people and put them on management position. He believes YOUNG means “Aspiring, Brilliant, Creative, Dynamic” which can take big change on us such an old historic company.

4. WHY CHOOSE SINO?

Compared with most CNC machine suppliers, we have following advantages:

1. Independent research and develop ability

Absorbing advanced design ideas from Japan and Taiwan, combining with our long years experience in metal working industry, we design our own machines. Structure of Machine body, saddle and column etc, all had been optimized by CAE system, and also analyzed by FEM.



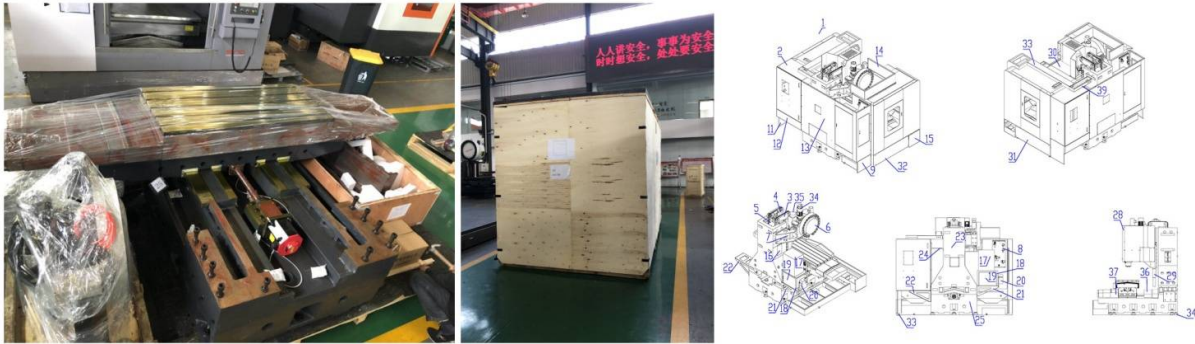
2. On-site parts processing

We process all casting parts in our own workshop where equips with five axis CNC machining centers from OKUMA, double-column machining center from NICOLÁS CORREA, and other CNC boring and milling center etc.



3. ISO quality control system and 6S site management.

4. Standard machine delivery is within 30days. Machine well applied with anti rust measures and secured wooden case package. Explosive view drawing together if any parts disassembled.



5. Independent application experience center. Comprehensive presale solution and trial testing service offered.



6. On site service and training at customer site periodically and paid installation service offered on customer's requirements.

